

# JAPAN

## MAIN ECONOMIC INDICATORS

Surface Area: 377,9 1000 sq km \*\*  
 Population: 127,9 Millions of inhabitants - 2011 (estimates after 2010) \*  
 Current GDP: 4 206,5 Billions of euros - 2011 (estimates after 2010) \*  
 GDP per capita: 32 883,4 Euros - 2011 (estimates after 2010) \*

\* : IMF (World Economic Outlook) \*\*\* : IMF (DoTs & WEO)

\*\* : World Bank (World Development Indicators)

\*\*\*\* : Trade-to-GDP ratio = (Exports + Imports) / GDP

|  | 2008               | 2009 | 2010 | 2011 |
|--|--------------------|------|------|------|
| Exports-to-GDP ratio:                                      | 13,2 % (2010) ***  |      |      |      |
| Imports-to-GDP ratio:                                      | 12,3 % (2010) ***  |      |      |      |
| Trade-to-GDP ratio:  | 25,5 % (2010) **** |      |      |      |
| Real GDP growth (% estimates after 2010) *                 | -1,2               | -6,3 | 4,0  | -0,5 |
| Inflation rate (% estimates after 2010) *                  | 1,4                | -1,4 | -0,7 | -0,4 |
| Current account balance (% of GDP, estimates after 2010) * | 3,2                | 2,8  | 3,6  | 2,5  |

## GDP BY SECTOR

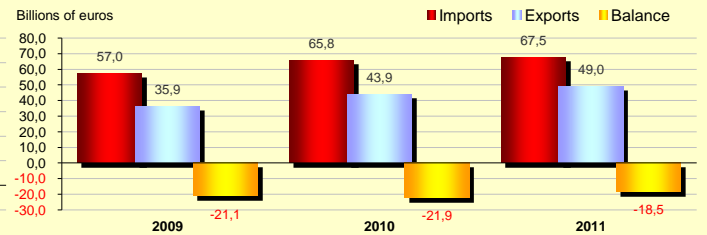
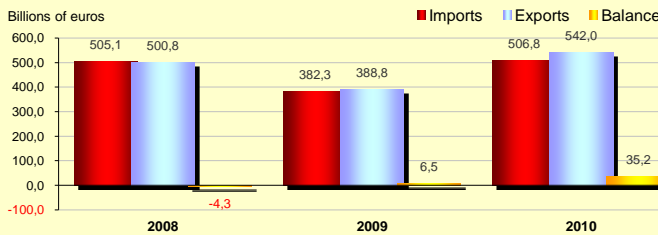


Source: World Bank (World Development Indicators)

## TRADE IN GOODS

### JAPAN WITH THE WORLD

### EU27 WITH JAPAN



Source: IMF (Direction of Trade Statistics - DoTS)

Source: Eurostat (Comext, Statistical Regime 4)

### % OF THE WORLD (excluding Intra-EU Trade)

2008 2009 2010

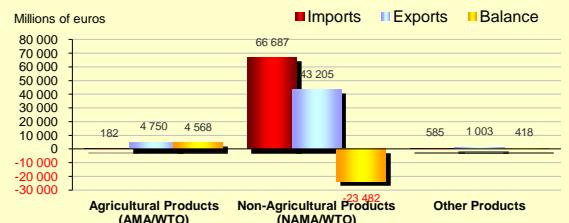
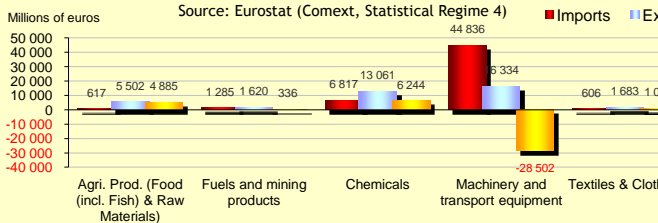
|         |      |      |      |
|---------|------|------|------|
| Imports | 6,2% | 5,7% | 5,9% |
| Exports | 6,4% | 6,1% | 6,5% |

### % OF TOTAL EXTRA-EU27

2009 2010 2011

|         |      |      |      |
|---------|------|------|------|
| Imports | 4,7% | 4,4% | 4,0% |
| Exports | 3,3% | 3,2% | 3,2% |

## EU27 MERCHANDISE TRADE WITH JAPAN BY PRODUCT (2011) - SITC\* (UN, WTO/ITS) & AMA/NAMA (WTO) BREAKDOWNS

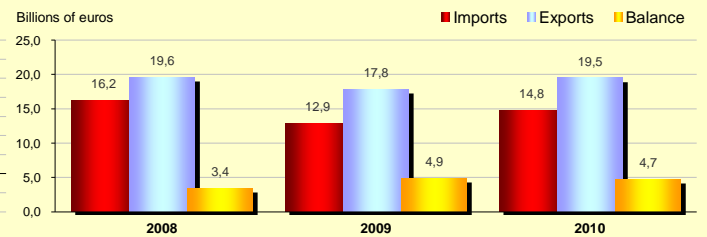
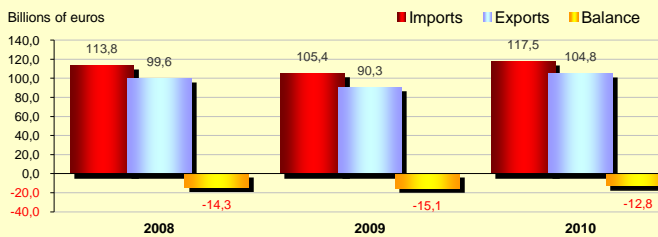


\* SITC Rev. 3: Agri. Prod. (Food incl. Fish) & Raw Materials): 0, 1, 2, 4, excl. 27, excl. 28; Fuels and mining products: 3, 27, 28, 68; Chemicals: 5; Machinery and transport equipment: 7; Textiles & Clothing: 65, 84

## TRADE IN COMMERCIAL SERVICES (SERVICES EXCLUDING "GOVERNMENT SERVICES")

### JAPAN WITH THE WORLD

### EU27 WITH JAPAN



Source: World Trade Organisation

Source: Eurostat (NewCronos)

### % OF THE WORLD (excluding Intra-EU Trade)

2008 2009 2010

|         |      |      |      |
|---------|------|------|------|
| Imports | 6,2% | 6,2% | 5,8% |
| Exports | 5,2% | 5,0% | 5,0% |

### % OF TOTAL EXTRA-EU27

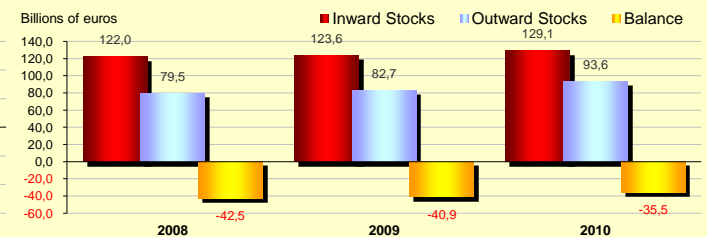
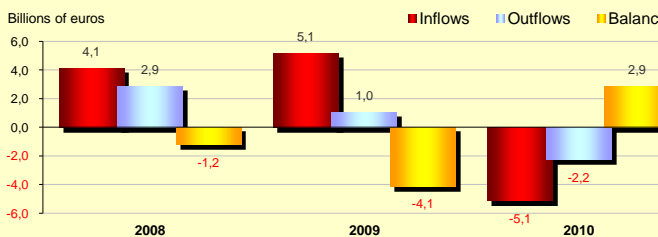
2008 2009 2010

|         |      |      |      |
|---------|------|------|------|
| Imports | 3,6% | 3,2% | 3,3% |
| Exports | 3,8% | 3,7% | 3,7% |

## FOREIGN DIRECT INVESTMENT

### EU27 FDI WITH JAPAN

### EU27 STOCKS OF FDI WITH JAPAN



Source: Eurostat (NewCronos)

Source: Eurostat (NewCronos)